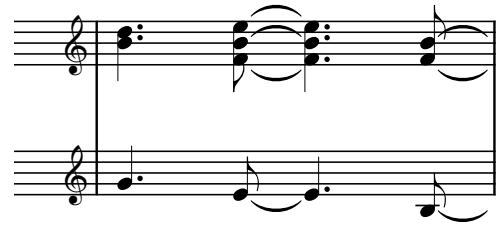
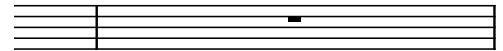


G#m Esus2 B5



START **Steady** ♩ = 81

D#m7 Esus2 B5 B5/A#

So, let that lone - ly feel - ing wash a - way

G#m7 Esus2 B5 F#(add4)

May - be there's a rea - son to be - lieve you'll be o - kay 'Cause

G#m7 Esus2 B5 G#m7 Esus2

when you don't feel strong enough \_\_\_\_\_ to stand You can reach, reach out \_\_\_\_\_

Detailed description: This system contains the first two measures of the piece. The vocal line starts with a quarter note on G#4, followed by eighth notes on A#4, B4, and C5. The piano accompaniment features a steady eighth-note bass line in the left hand and chords in the right hand. Chord changes are indicated above the staff: G#m7, Esus2, B5, G#m7, and Esus2.

B5 F#sus B/D# Esus2 Esus2/G#

\_\_\_\_\_ your hand, and Oh \_\_\_\_\_ some-one will come run-nin' And I

Detailed description: This system contains measures 3 through 6. The vocal line has a quarter rest in measure 3, followed by a quarter note on G#4 in measure 4, and eighth notes in measures 5 and 6. The piano accompaniment continues with chords and moving bass lines. Chord changes are indicated: B5, F#sus, B/D#, Esus2, and Esus2/G#.

F#sus B/D# E(add2)

know \_\_\_\_\_ they'll take you \_\_\_\_\_ home

Detailed description: This system contains measures 7 through 9. The vocal line has a quarter note on G#4 in measure 7, followed by eighth notes in measures 8 and 9. The piano accompaniment features sustained chords and a moving bass line. Chord changes are indicated: F#sus, B/D#, and E(add2).

**More relaxed, quasi rubato**

B5 F#(add4)

E - ven when the dark comes crash - in' through When you need a friend to car - ry you \_\_\_\_\_

Detailed description: This system contains measures 10 through 12. The tempo/style marking 'More relaxed, quasi rubato' is indicated. The vocal line has a quarter note on G#4 in measure 10, followed by eighth notes in measures 11 and 12. The piano accompaniment features sustained chords and a moving bass line. Chord changes are indicated: B5 and F#(add4).

G#m7 Esus2

And when you're broken on the ground you will be found

a tempo (♩ = 81)  
B F#(add4)

a tempo

So let the sun come stream-in 'Cause you'll reach up and you'll rise a-gain

G#m7 Esus2

Lift your head and look a-round You will be found

Più mosso ♩ = 89  
Bsus2

END

with pedal